

# *iChemExplorer* Application

## Classical Chiral Resolution

Turn your LC and LC/MS into an Automated Screening System  
Chemistry to Results in a LC Sample Vial

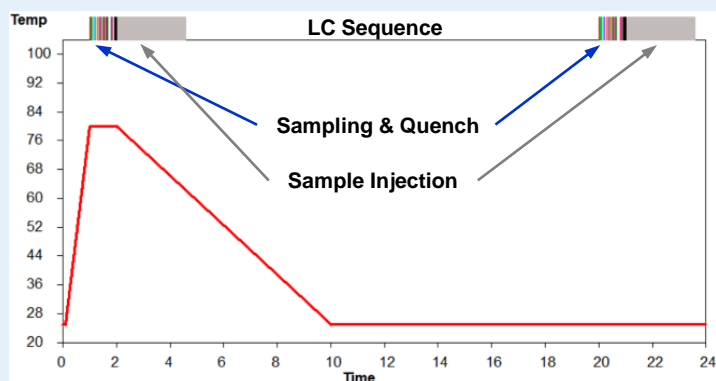
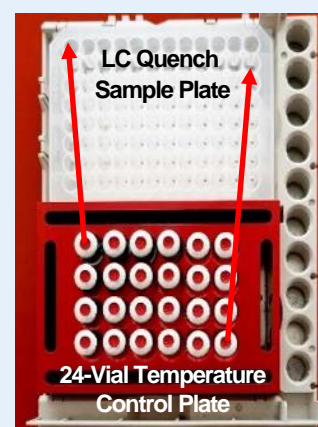


***iChemExplorer*** is an innovative hardware/software module integrated into your HPLC autosampler:

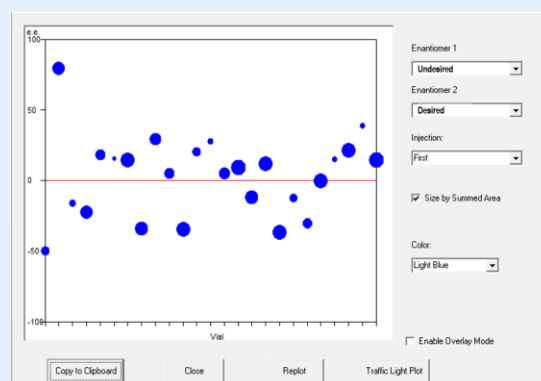
- Heating and cooling (5 to 150 °C)
- Stirring up to 1200 rpm
- Proprietary in-vial filter insert technology
- Intuitive software interface for experiment design and execution
- Application specific data analysis and reporting

***iChemExplorer*** enables classical chiral resolution screening by diastereomeric salt crystallization in LC sample vials:

- 24 varying resolution conditions (resolving agents, molar ratio, solvent, etc)
- User-defined heat-cool and equilibration profile
- Automated sampling, quench, dilution and LC injection of plate samples
  - ✓ After equilibration at hot temperature for solubility or dissolution
  - ✓ At the end of crystallization for solubility and mother liquor *de*
- Calculate maximum yield and *de* of crystallized salts based on mass balance
- Automated crystallization and LC analysis in real time



Integrated Temperature Program and LC Sequence



*de* Plot of 24 Screening Samples

### A Case Study of Chiral Resolution Screening

Rational Screening Approach for Classical Chiral Resolution under Thermodynamic Equilibrium

H. Tan *et al.*, *Org. Pro. Res. Dev.* 2011, 15, 53