

iChemExplorer Application

Reaction Control by Dosing

Turn your LC and LC/MS into an Automated Screening System
Chemistry to Results in a LC Sample Vial

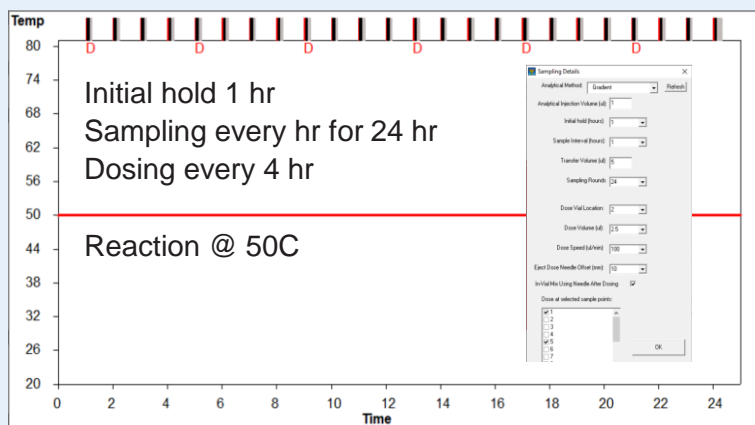
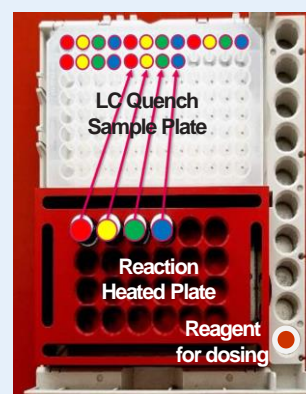


iChemExplorer is an innovative hardware/software module integrated into your HPLC autosampler:

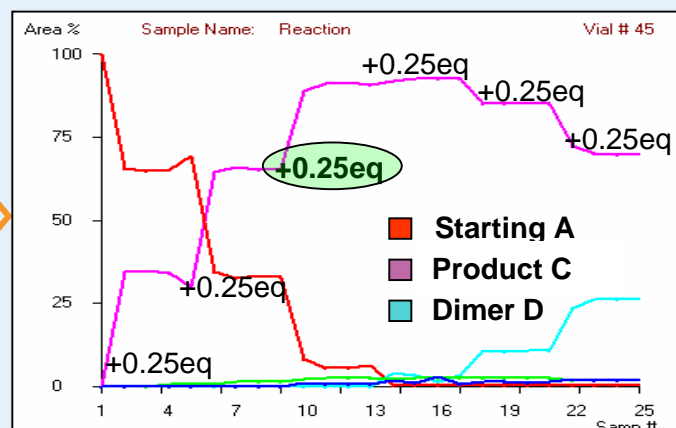
- Heating and cooling (5 to 150 °C)
- Stirring up to 1200 rpm
- Proprietary in-vial filter insert technology
- Intuitive interface for experiment design and execution
- Real time LC peak profiling for reaction kinetics

iChemExplorer enables reagent dosing for reaction control and kinetic study in 2 mL vials

- Dedicated UI for dosing experiment
- Automated LC sequence for reagent doses and reaction sample time points, coupled with temperature program
- Sampling, quench and LC analysis of in-vial filtered reaction mixture throughout time course
- Critical for process control to avoid unwanted byproduct



UI-Defined LC Sequence of Sampling and Dosing



Real Time LC Peak Profiling

Reagent B dose: 0.25 eq = 2.5 uL, 3x 0.25 eq for optimum yield of Product C in 12 hr

