

# *iChemExplorer* Application

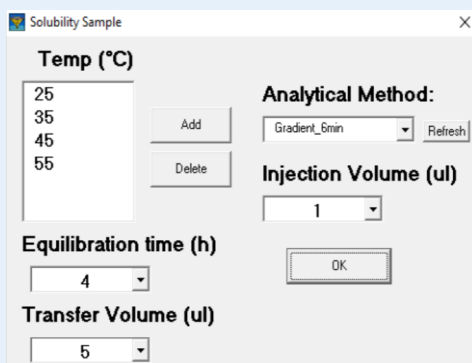
## Solubility vs. Temperature

Turn your LC and LC/MS into an Automated Screening System  
Chemistry to Results in a LC Sample Vial

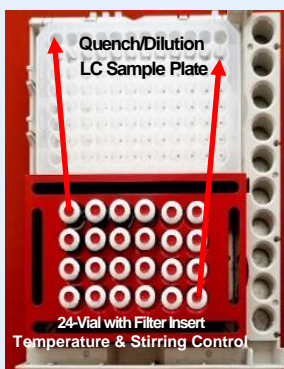


***iChemExplorer*** is an innovative hardware/software module integrated into your HPLC autosampler:

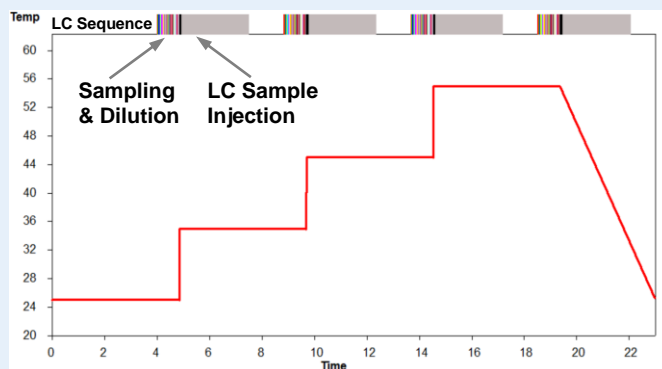
- Heating and cooling (5 to 150 °C)
- Stirring up to 1200 rpm
- Proprietary in-vial filter insert technology
- Intuitive interface for experiment design and execution
- Application specific data analysis and reporting



Solubility UI



On-Plate Sampling  
Dilution and Analysis



Automated Equilibration and Sample Injection

***iChemExplorer*** enables solubility measurement at different temperatures in 2 mL LC vials:

- Dedicated UI for solubility protocol
- Up to 24 solvent compositions in one experiment
- User-defined temperature, agitation and equilibration profiles
- Automated sampling, quench/dilution and LC injection of in-vial filtered samples throughout equilibration period
- Plot of solubility vs. temperature and fitting to Van's Hoff equation

